



# iAir App User Manual

V1.0.1, July. 2025



Technical Support: [service@icpdas.com](mailto:service@icpdas.com)

Author: Tommy Hong

Editor: Anna Huang

## Warranty

---

All products manufactured by ICP DAS are under warranty regarding defective materials for a period of one year, beginning from the date of delivery to the original purchaser.

## Warning

---

ICP DAS assumes no liability for any damage resulting from the use of this product. ICP DAS reserves the right to change this manual at any time without notice. The information furnished by ICP DAS is believed to be accurate and reliable. However, no responsibility is assumed by ICP DAS for its use, nor for any infringements of patents or other rights of third parties resulting from its use.

## Copyright

---

Copyright @ 2025 by ICP DAS Co., Ltd. All rights are reserved.

## Trademark

---

Names are used for identification only and may be registered trademarks of their respective companies.

## Contact US

---

If you have any problem, please feel free to contact us by email at: [Service@icpdas.com](mailto:Service@icpdas.com). You can count on us for quick response.

# Contents

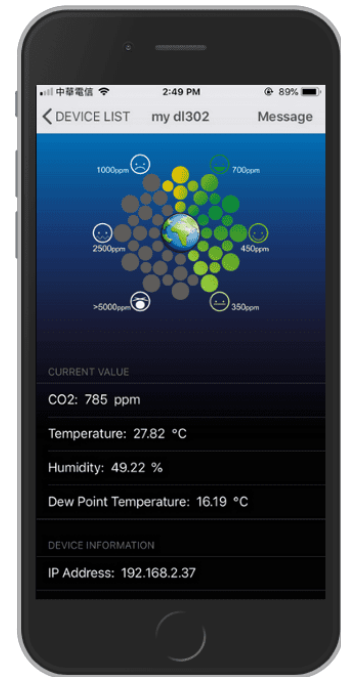
<b>Contents .....</b>	<b>3</b>
<b>1. About iAir.....</b>	<b>4</b>
<b>2. Connection.....</b>	<b>6</b>
2.1. Connecting to a Device via Ethernet .....	6
2.2. Connecting to a Device via the Device's Wi-Fi (AP Mode) .....	9
<b>3. Device and Group Management .....</b>	<b>12</b>
3.1. Adding a Device into a Group .....	12
3.2. Viewing the Communication Parameters and Real-Time Data.....	14
<b>4. Tips .....</b>	<b>15</b>
4.1. Wi-Fi Without Internet on Android 7 or Later .....	15
4.2. Only DL-300 series devices support message display functions. ....	16
<b>Revision History .....</b>	<b>17</b>

# 1. About iAir

The iAir app allows users to read real-time measurement data from DL, CL, and iSN series modules using mobile devices such as smartphones or tablets. It also enables group-based management of these sensing modules.





## Features

- **Real-Time Data Retrieval**  
Retrieve real-time data from DL, CL, and iSN series modules.
- **Group Management**  
Organize devices into user-defined groups for easier monitoring.
- **Local Network Search**  
Search for DL, CL, and iSN series modules in the local network.
- **Remote Text Control (DL-300 Only)**  
Remotely control DL-300 series modules to display multilingual messages (UTF-8 format).
- **Sound-Based Identification**  
Control the speakers of DL, CL, and iSN modules to help identify specific devices.



## How to Download

You can download the iAir app by searching the keywords in Google Play or App Store, or by scanning the QR codes below.

Platform	Keyword to Search	QR Code
Available on Google Play 	ICPDAS, CO2CO, iAir	
Available on App store 	ICPDAS, iAir	

## Supported Modules

Series	Mode Name
CL-200 Series	CL-201-E, CL-202-E, CL-203-E, CL-204-E, CL-205-E, CL-206-E, CL-207-E, CL-208-E, CL-210-E, CL-211-E, CL-212-E, CL-213-E, CL-220-E, CL-221-E, CL-222-E, CL-223-E, CL-250-E CL-201-WF, CL-202-WF, CL-203-WF, CL-204-WF, CL-205-WF, CL-206-WF, CL-207-WF, CL-208-WF, CL-210-WF, CL-211-WF, CL-212-WF, CL-213-WF, CL-220-WF, CL-221-WF, CL-222-WF, CL-223-WF, CL-250-WF
DL-100 Series	DL-100S-E, DL-101S-E, DL-110S-E, DL-120-E, DL-100S-E-W, DL-101S-E-W, DL-110S-E-W, DL-120-E-W
DL-300 Series	DL-301, DL-302, DL-303, DL-301-WF, DL-302-WF, DL-303-WF, DL-301-IP65, DL-302-IP65, DL-303-IP65, DL-305-IP43, DL-301-WF-IP65, DL-302-WF-IP65, DL-303-WF-IP65
DL-1000 Series	DL-1020, DL-1021, DL-1022, DL-1023, DL-1025, DL-1028, DL-1038, DL-1050, DL-1052
iSN Series	iSN-201

## 2. Connection

This chapter explains how to connect to DL, CL, or iSN modules using either a wired Ethernet network or a built-in AP (Wi-Fi) mode.

### 2.1. Connecting to a Device via Ethernet

This section explains how to connect your phone to a device using a wired Ethernet network through the iAir app.

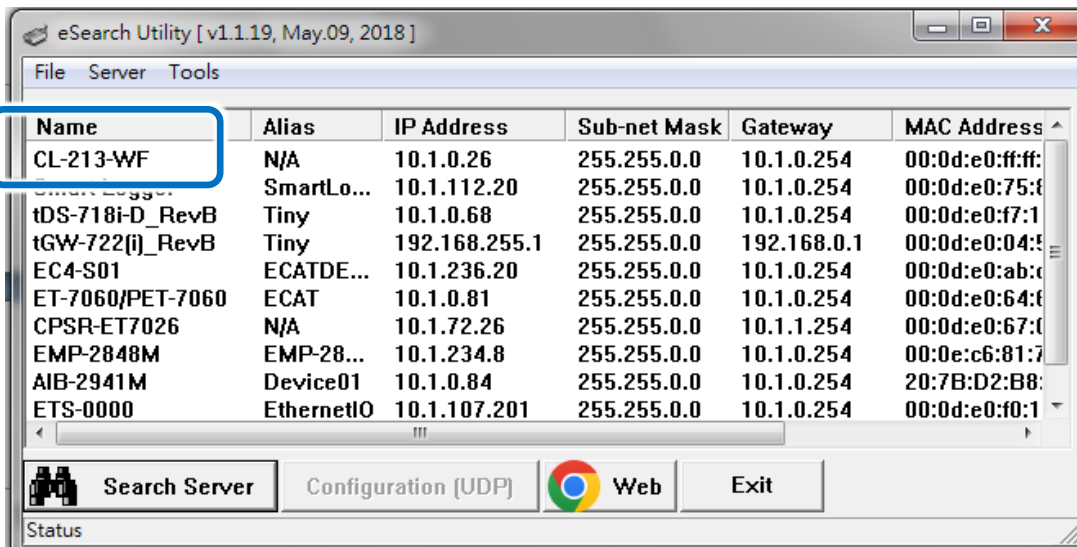


1. Connect the device to the network using the RJ45 Ethernet port.
2. On your Android phone, connect to the same Wi-Fi network.

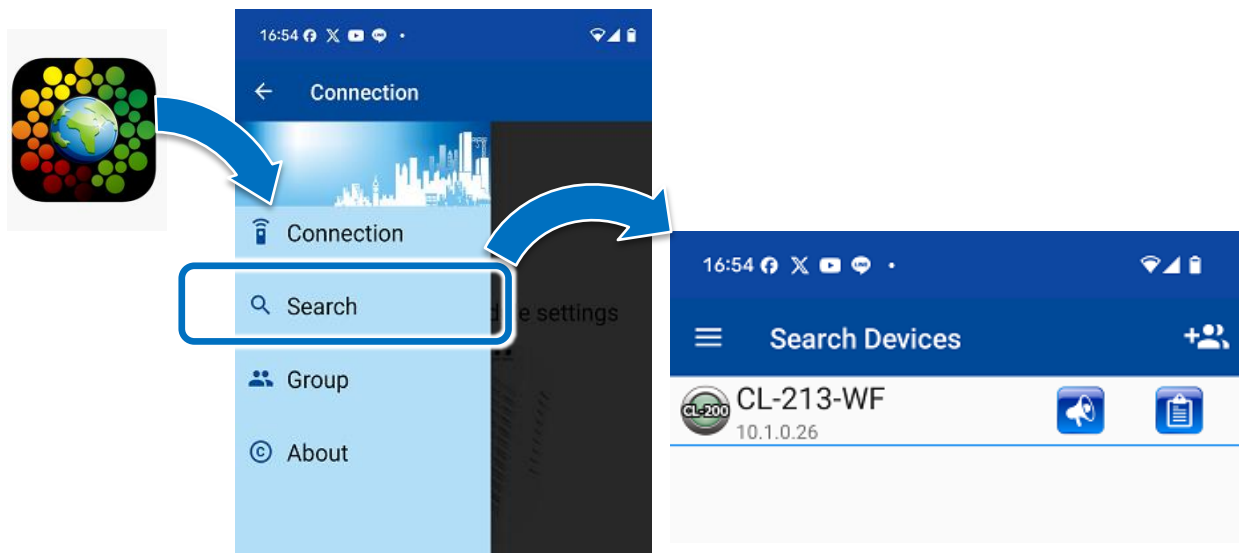


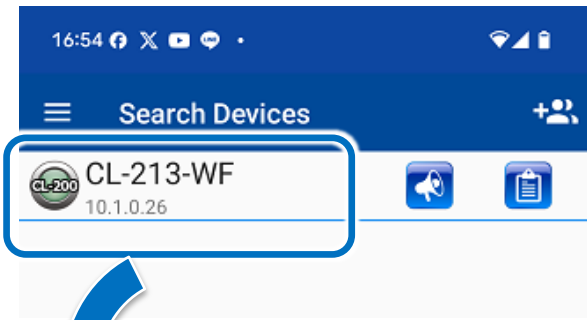
3. On a PC, run the **eSearch utility** to check that the device appears.

If the device is still booting, please wait a few moments and retry.

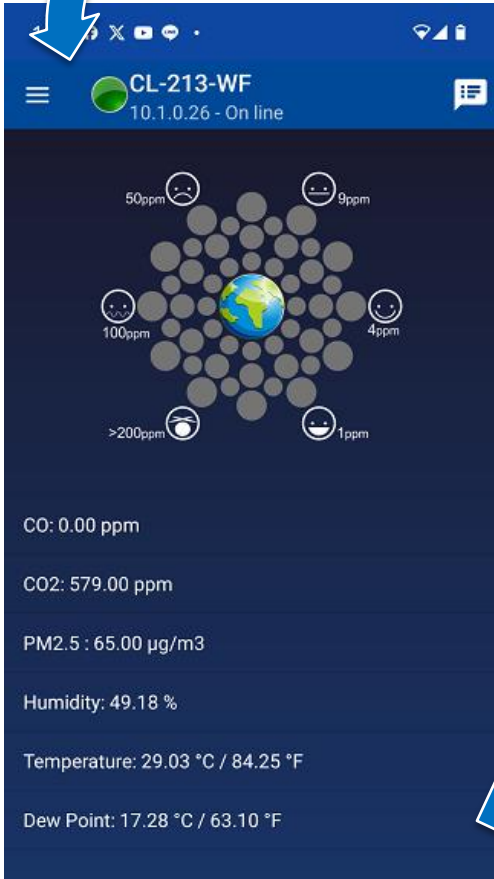


4. Return to your phone. Open the iAir app and tap **Search** to discover devices automatically.

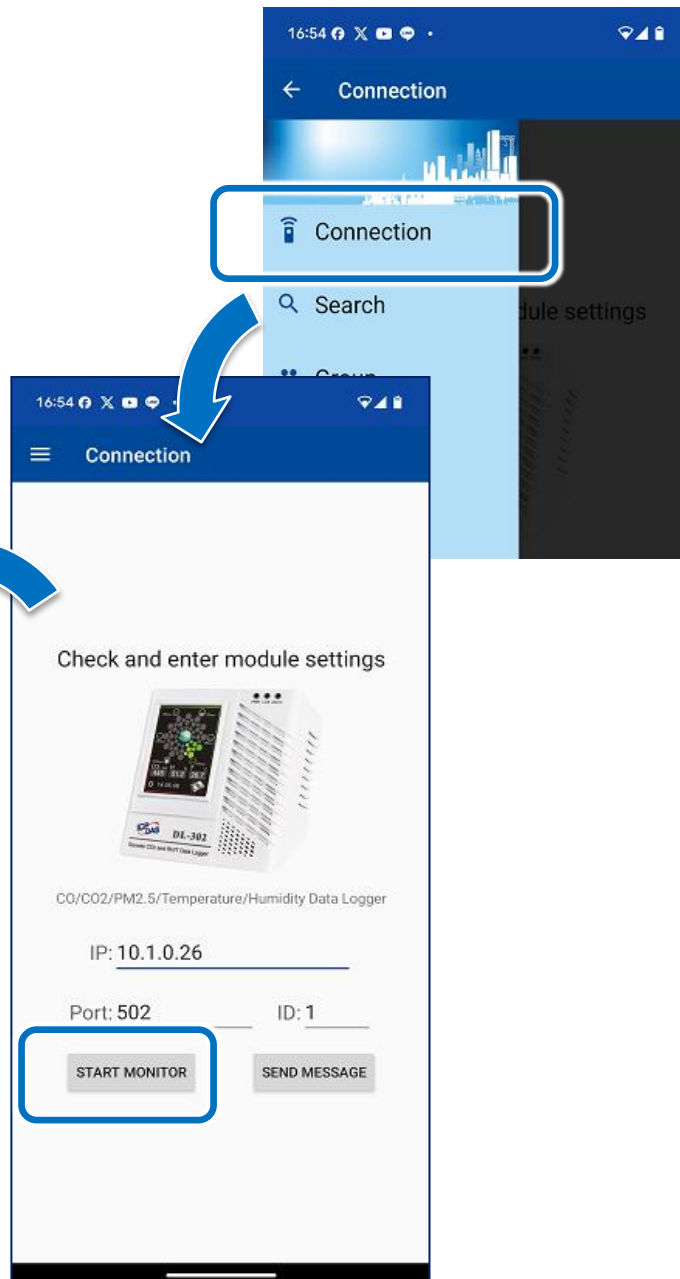




Once the device is found, tap the device name to view its detailed information.



Alternatively, you can manually enter the device's IP address in the connection page and tap Start Monitor.

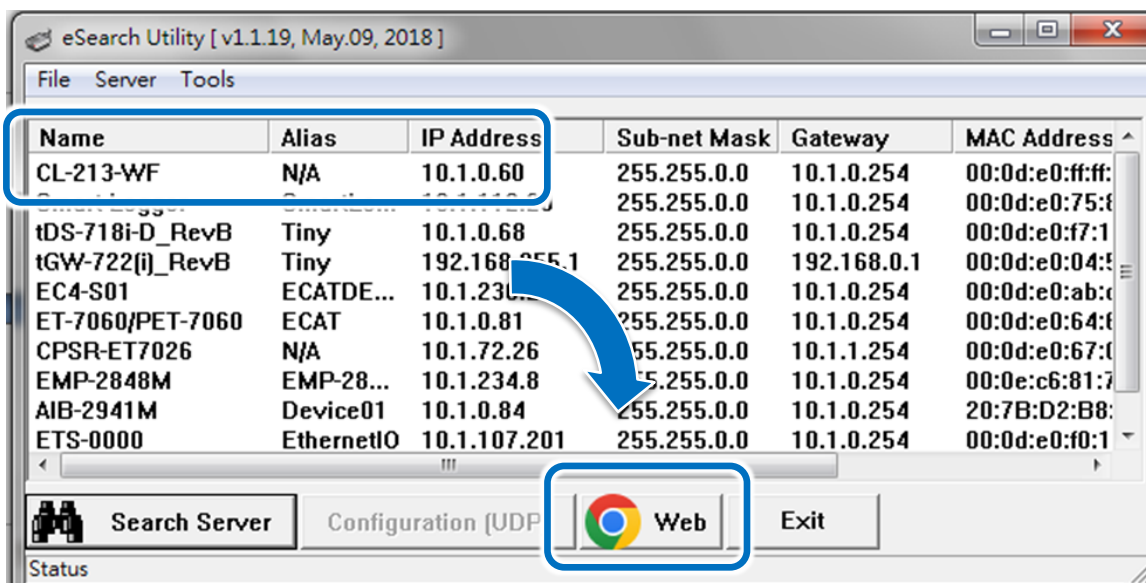


## 2.2. Connecting to a Device via the Device's Wi-Fi (AP Mode)

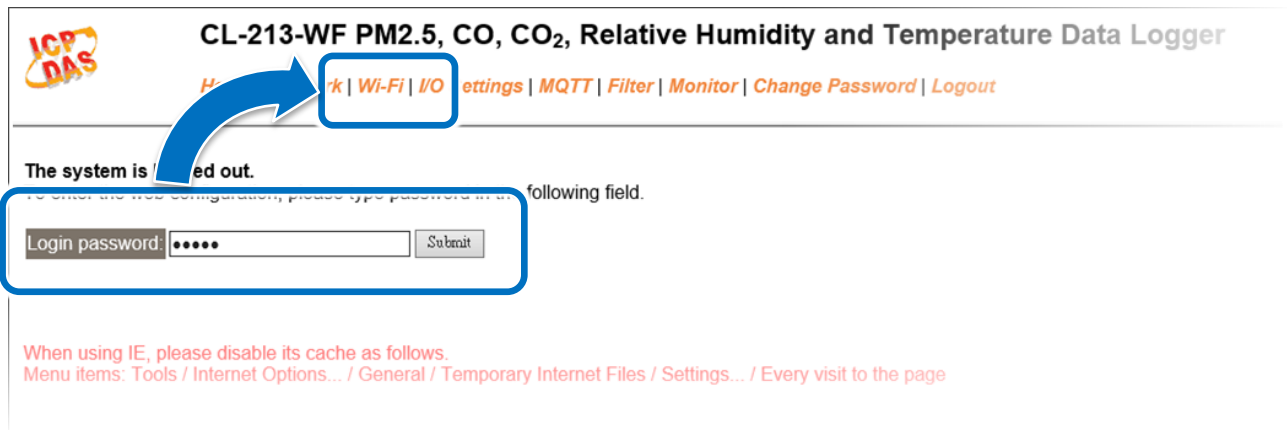
This section guides you through connecting to the device using its built-in Wi-Fi access point (AP mode), useful when no router is available.



1. Connect the device to power and connect it via RJ45 Ethernet for configuration.
2. On a PC, run the **eSearch utility** to find the device's IP address.
3. Select the module, and **Web** button.



4. Log in to the device's web configuration page, and go to the **Wi-Fi** tab.



5. Set **Wi-Fi Mode** to **AP (Access Point)**.

6. Edit the **SSID** or **password** as needed, and click **Update Settings**.

#### Wi-Fi Settings

Wi-Fi Settings	Current	New
Mode	AP	AP   Default: AP
Wireless Security	WPA/WPA2, *****	WPA/WPA2   Password: *****
DHCP Server (AP Mode)	On, 192.168.2.34	On   Start IP: 192   168   2   34
Wi-Fi Channel (AP Mode)	11	11
IP Address Type (Station Mode)	DHCP	DHCP
IP Address	192.168.2.35	192   168   2   35
Subnet Mask	255.255.255.0	255   255   255   0
Gateway	192.168.2.1	192   168   2   1
SSID	CL-213	CL-213 (Max. 32 chars)
Modbus TCP port	502	502 (Default= 502)

Update Settings

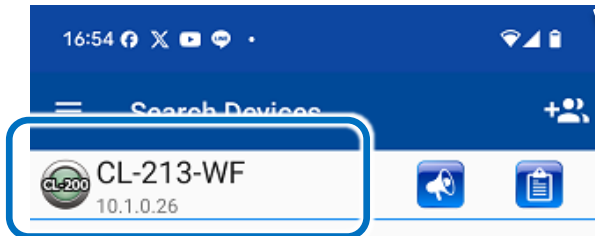
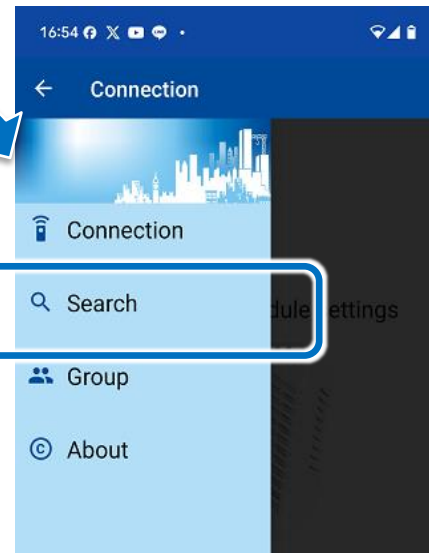
7. On your phone, go to Wi-Fi settings and connect to the SSID (e.g., "CL-213").



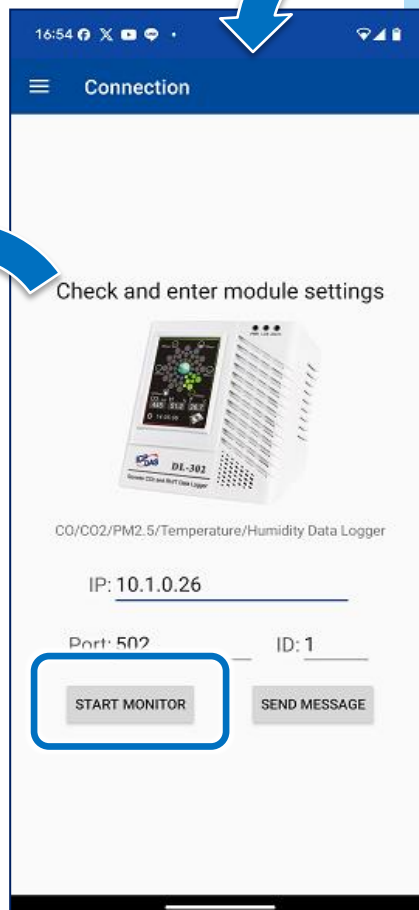
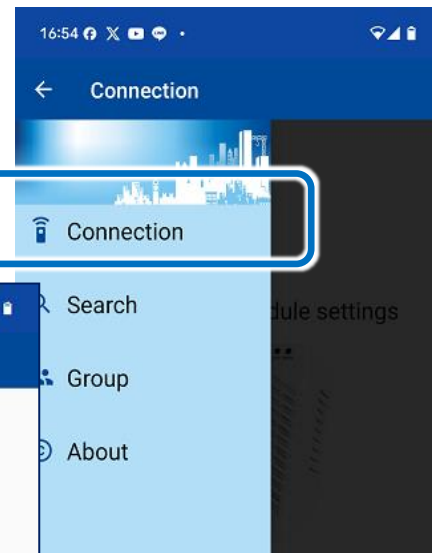
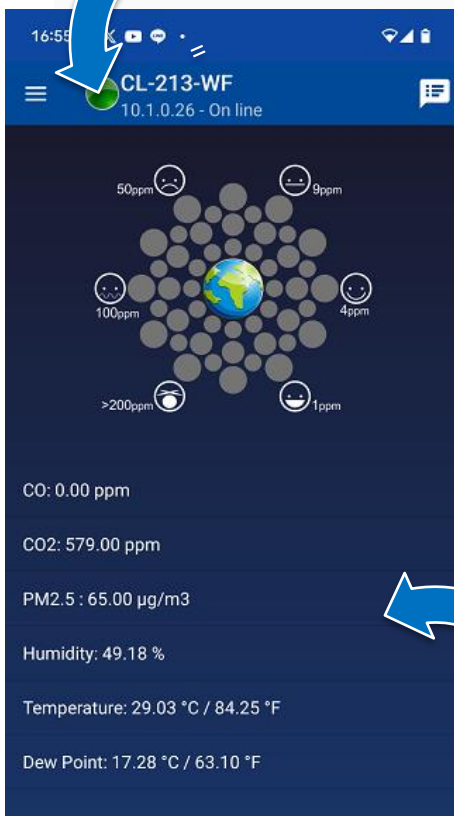
8. Open the iAir app and tap **Search** to discover devices automatically.



Once the device is found, tap the device name to view its detailed information.



Alternatively, you can manually enter the device's IP address in the connection page and tap Start Monitor.



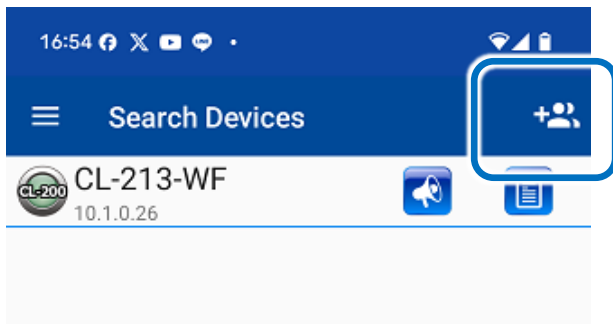
# 3. Device and Group Management

This chapter describes how to add devices into groups and view real-time information.

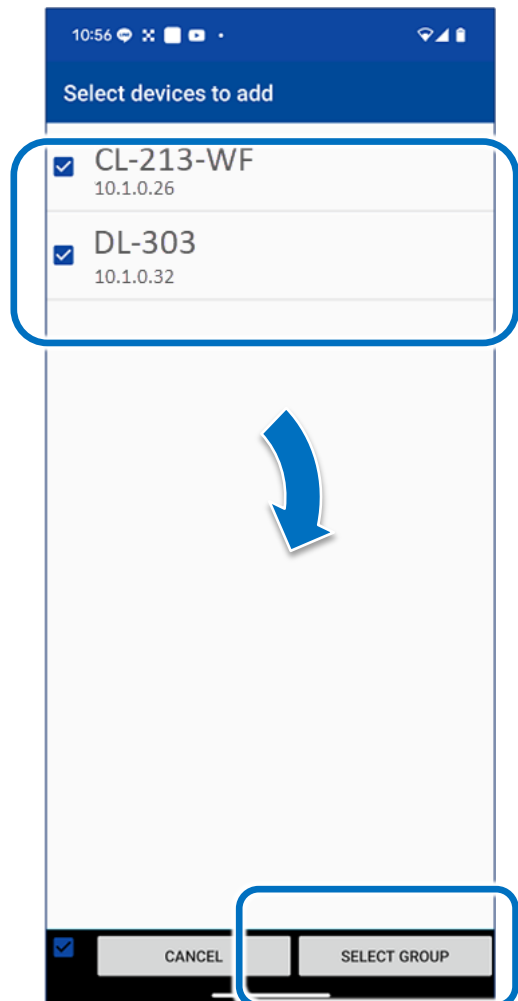
## 3.1. Adding a Device into a Group

The Group feature allows users to organize multiple devices for easier management within the iAir app.

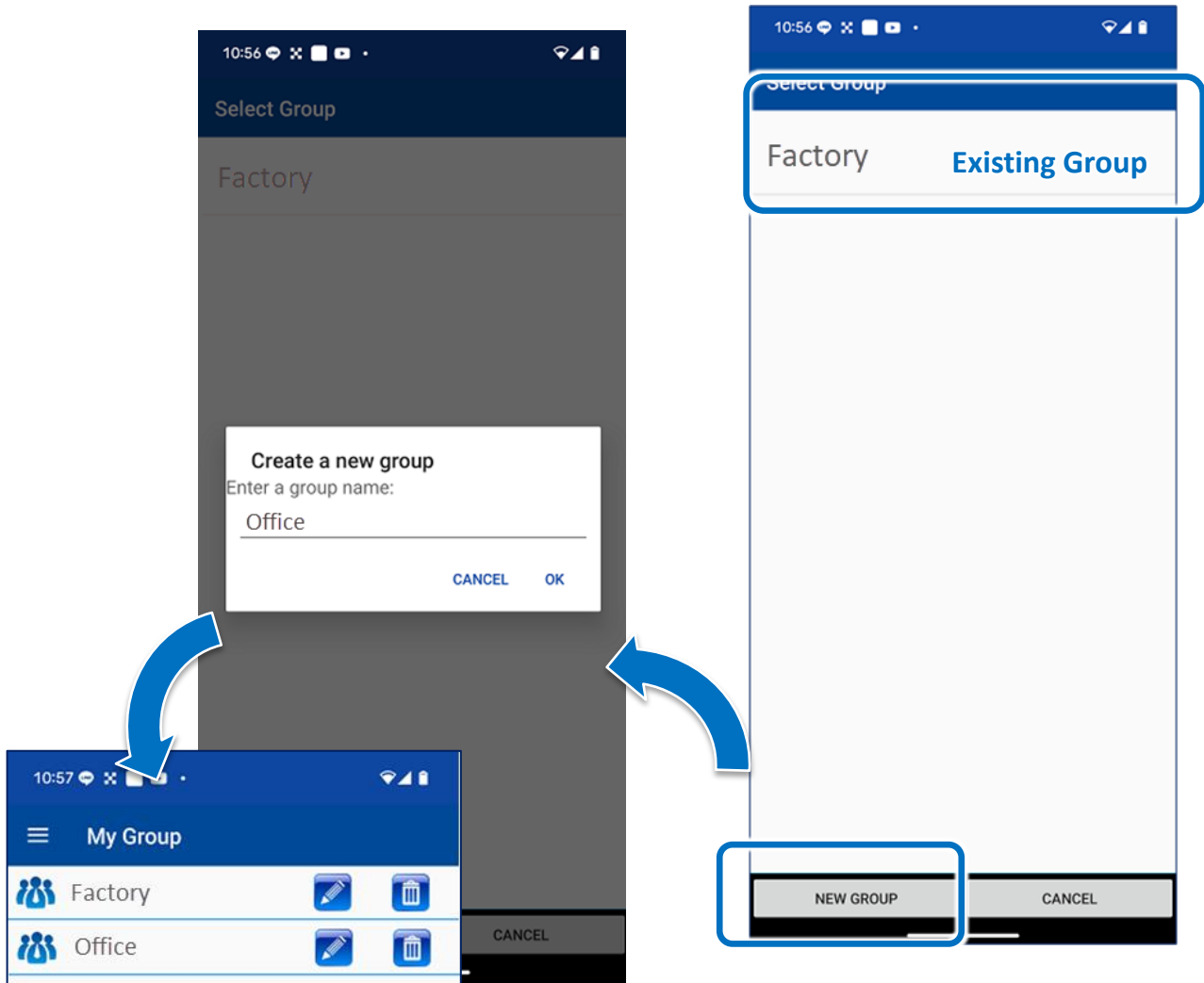
1. After discovering a device, tap **Add to Group**.



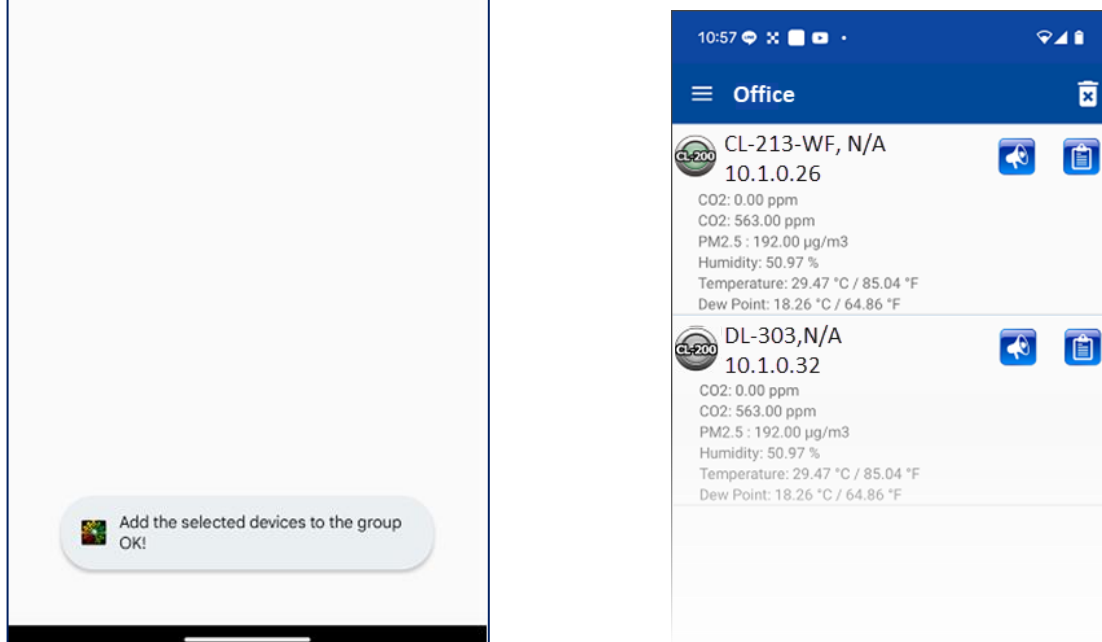
2. Select one or more devices and tap **Select Group**.



3. Choose an existing group, or tap the **NEW GROUP** button to create a new group.



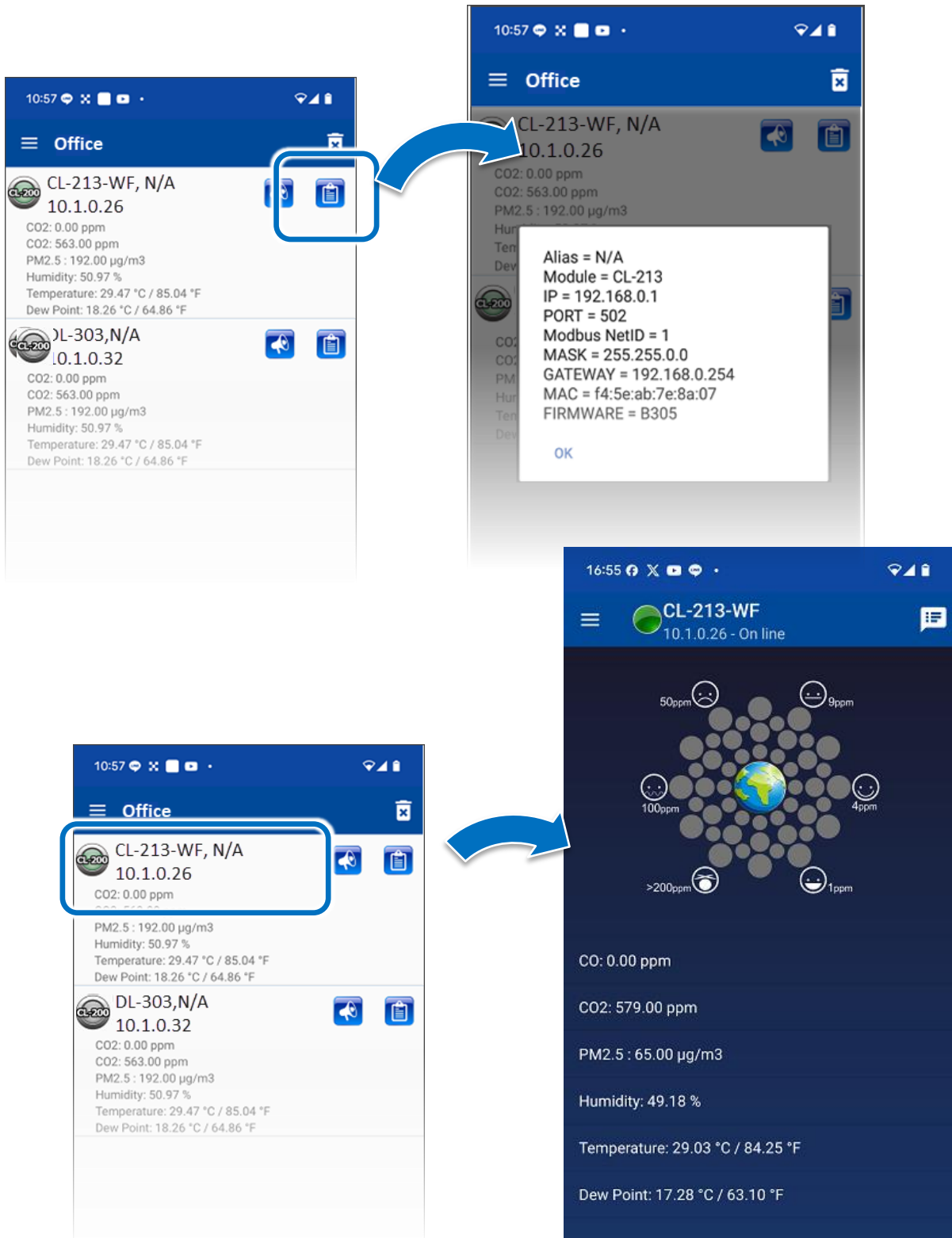
4. Tap the group name to open its device list.



### 3.2. Viewing the Communication Parameters and Real-Time Data

This section explains how to access and monitor the communication settings and real-time sensor data of connected devices using the iAir app.

To view a device's real-time data and communication settings, ensure your phone is connected to the same local Ethernet network.

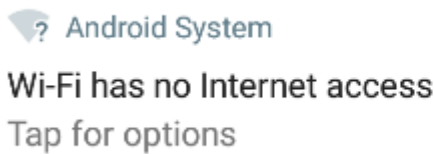


## 4. Tips

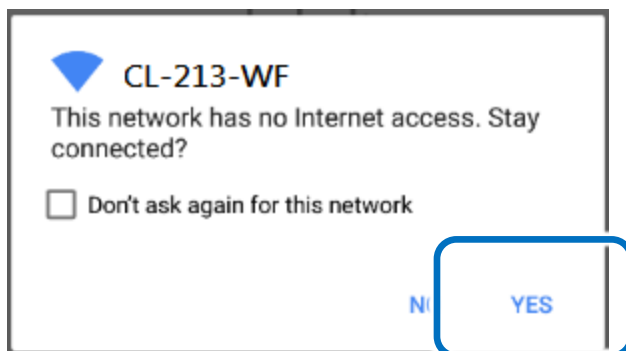
### 4.1. Wi-Fi Without Internet on Android 7 or Later

When connecting to CL-213-WF in AP mode (no Internet access), newer Android versions may prompt a system message.

Tap the notification when it appears.



Select YES to remain connected to the network. If NO is selected, the system will disconnect automatically.

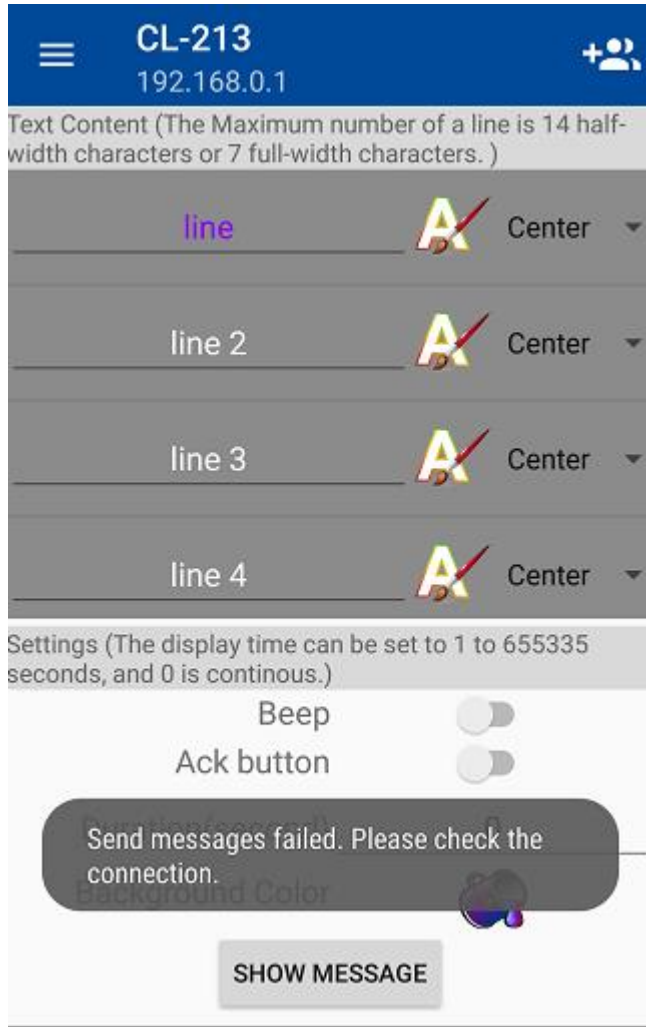


A confirmation message will appear upon successful connection.



## 4.2. Only DL-300 series devices support message display functions.

Other devices do not include a screen, so the message function is unavailable.



# Revision History

The table below shows the revision history.

Revision	Date	Description
1.0.1	July 2025	Initial issue